

# Company Profile



**AMIN ALI AL NAMR GEN. CONT. EST.**

**امين على النمر جنرل كنٲريكٲنگ اسٲيلشمنٲ**



رؤية  
VISION  
**2030**  
المملكة العربية السعودية  
KINGDOM OF SAUDI ARABIA

**Your Vision, Our Commitment**  
**Reliable Solutions for Every Industrial Need**

# INTRODUCTION

Amin Ali Al Namr Gen. Cont. Est. is a 100% Saudi-owned and officially registered company based in the Kingdom of Saudi Arabia. With a strong footprint across different regions of the country, we have earned a solid reputation for delivering complete and reliable contracting services.

Our operations are structured into specialized divisions, including Construction, Civil Engineering, and Project Management. By combining advanced equipment with the latest technology, we ensure high-quality service delivery that is tailored to meet each client’s specific requirements.

We are committed to achieving outstanding results—delivering solutions that are efficient, on schedule, and within budget. Our experienced team is always exploring new industry trends and innovations to offer creative, client-focused services. This forward-thinking approach helps us stand out in the highly competitive contracting industry in Saudi Arabia.

# SERVICES OFFERED BY US

**01**

## Mechanical Services:

- Fabrication of carbon steel and stainless steel storage tanks, pressure vessels, and boilers
- Fabrication of steel structures, including PEB, medium, and heavy steel structures
- Fabrication of carbon steel and stainless steel piping
- Surface preparation through blasting and painting as per SES, APCS, and other relevant standards
- Installation and erection of mechanical equipment
- General trading

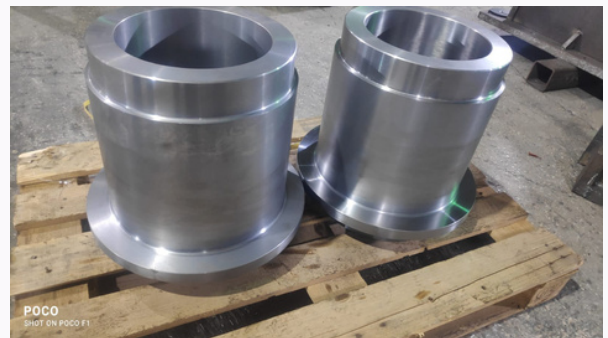
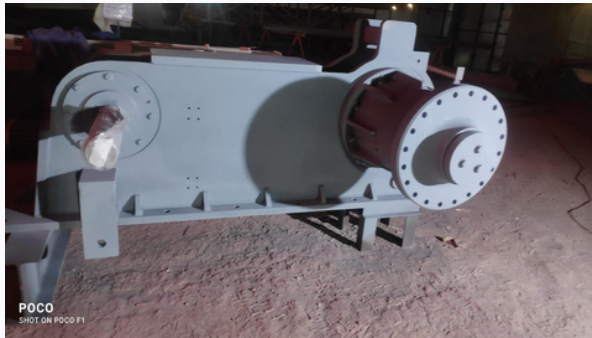




**02**

**Mechanical Maintenance:**

We offer a wide range of mechanical maintenance services, including equipment checks, repairs, and system upkeep. Our skilled team ensures reliable and efficient support to keep your operations running smoothly.



**03**

**Electrical and Instrumentation Services:**

We deliver professional electrical and instrumentation services, covering installation, maintenance, and calibration of electrical systems and control instruments. Our team ensures safe, efficient, and reliable system performance at all times.

**04**

**Electromechanical Services:**

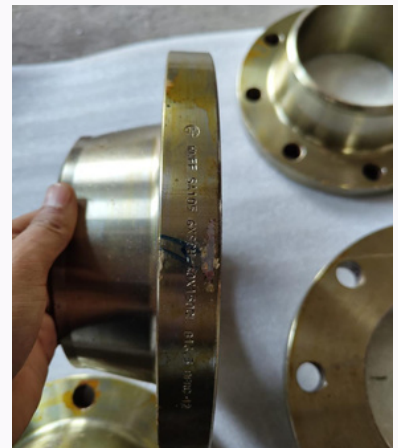
Our electromechanical services cover the complete installation, maintenance, and repair of electrical and mechanical systems, including HVAC, lighting, and control systems. We provide solutions that enhance the functionality, efficiency, and reliability of electrical and mechanical installations.

**05 Civil Works:**

Our company delivers a wide range of civil engineering services, from initial site preparation to full-scale construction and ongoing infrastructure maintenance. We ensure each project is completed with precision, quality, and in line with industry standards.

**06 General Trading Services:**

Our company offers comprehensive general trading services, connecting clients with trusted suppliers and quality products across various industries. We manage sourcing, procurement, and delivery with efficiency and transparency. Our focus is on providing reliable solutions, competitive pricing, and timely service to meet the diverse needs of our customers.



07

**Manpower Supply:**

We supply both skilled and unskilled manpower for a wide range of projects across various sectors. Our workforce is well-trained, experienced, and available on short notice –whether for long-term assignments or short-term needs.



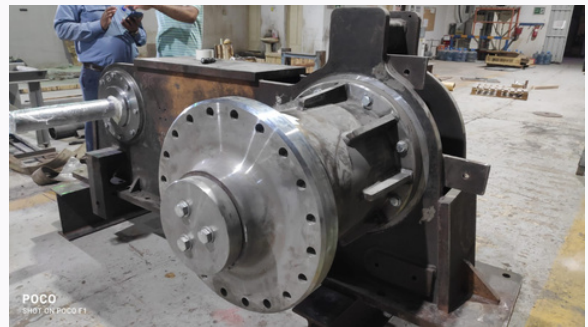
## 01 Fabrication Profile

Amin Ali Al Namr Gen. Cont. Est. is a trusted and well-established contracting company in the Kingdom of Saudi Arabia. We provide specialized services across key sectors, including Oil & Gas, Petrochemicals, Fertilizers, Cement, Water Desalination, Mining, and Power. Our expertise lies in delivering end-to-end project execution and industrial support services, tailored to meet the unique requirements of each client.

**Amin Ali Al Namr Gen. Cont. Est. is recognized for its strong capabilities in:**

- Piping and Mitre Fabrication
- Structural Steel Fabrication
- Installation of Mechanical Equipment
- Industrial Maintenance and Shutdown Services

In addition to our core services, Amin Ali Al Namr Gen. Cont. Est. provides complete design, fabrication, and installation solutions that ensure smooth project execution and high operational efficiency.



We are committed to safety, quality, and continuous innovation, always aiming to exceed client expectations. By delivering reliable and cost-effective services, we build long-term partnerships based on trust. Our strong understanding of complex industrial needs allows us to complete projects on time, within budget, and in full compliance with the highest industry standards.

## 02 Piping and Spool Fabrication

Pipes and fittings are vital elements in any piping system, enabling the safe and efficient transport of fluids, gases, or solids. Pipes serve as the main channels, while fittings are used to join sections, adjust flow direction, or control flow rate.



Together, they form the foundation of industrial piping networks, playing a critical role in sectors such as Oil & Gas, Petrochemicals, and Water Desalination by ensuring reliable and effective material movement.

A step coupling is designed to connect two pipes of different diameters. Made from flexible, durable materials—often reinforced with metal or plastic bands—it can easily adapt to various pipe sizes and materials. Step couplings are widely used in plumbing, drainage, and industrial systems, providing a secure, leak-proof connection between mismatched pipes. They are easy to install, cost-effective, and can compensate for minor pipe misalignments.



A mitre bend, on the other hand, is formed by cutting pipe segments at precise angles and welding them together to create a sharp change in direction within the piping system.

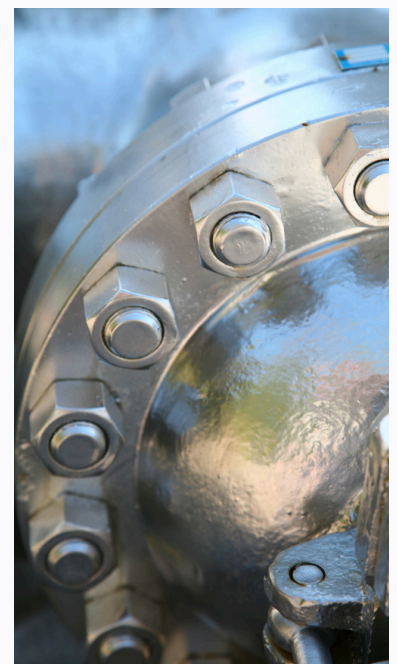
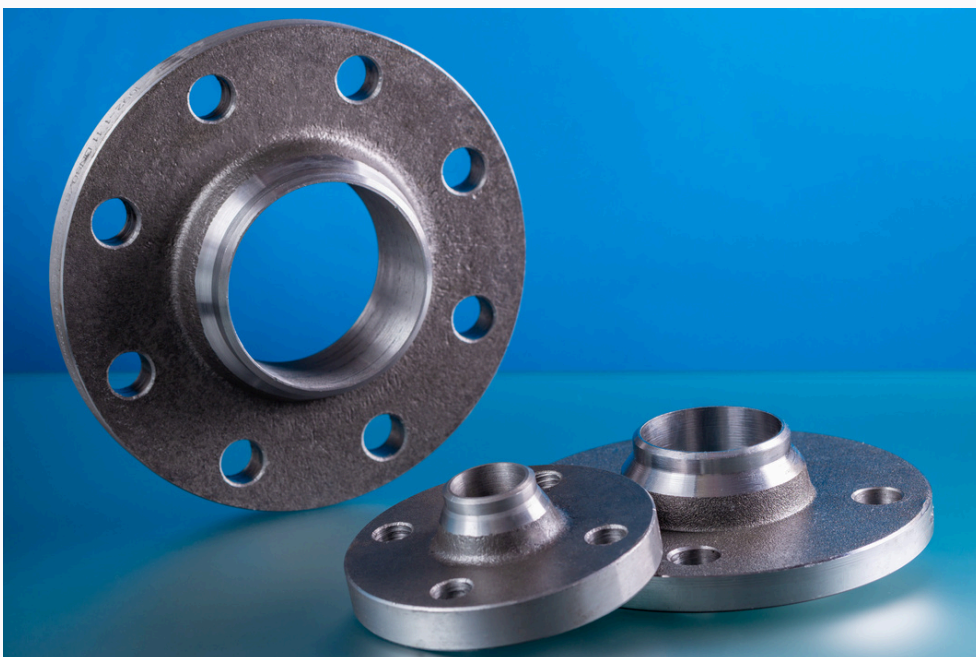
### 03 Erection of Equipment Steel Structure

Mitre bends are pipe fittings created by cutting straight pipe sections at specific angles and welding them together to form a bend. Unlike smooth radius bends, mitre bends consist of sharp-angled connections—usually in 45° or 90° increments. They are ideal for situations where large-radius bends are not practical or when space limitations demand tight directional changes within a piping system.



**Trading:**

Flanges are crucial components in piping systems, used to connect pipes, valves, pumps, and other equipment. They offer a strong yet detachable connection, making assembly, disassembly, maintenance, and inspection easy and efficient. Flanges are typically joined with bolts and sealed with a gasket to prevent leaks. Due to their strength and adaptability to different pressures and temperatures, flanges are widely used in industries such as Oil & Gas, Power, and Petrochemicals.



# SAFETY POLICY

The Safety Department at Amin Ali Al Namr Gen. Cont. Est. is fully committed to creating and maintaining a safe working environment for all employees. Our goal is to prevent accidents, minimize injury risks, and protect both people and property across all work sites.

We focus on identifying and eliminating potential hazards, ensuring a healthy, hazard-free workplace where safety is a shared responsibility. Employees are encouraged to actively participate in safety practices and openly communicate ideas and concerns to strengthen our safety culture.

In addition to jobsite safety, we promote safety awareness beyond work by offering guidance and training that help our team protect themselves and their families during off-duty hours.

Before starting any task, safety procedures are reviewed and reinforced to ensure full understanding and compliance.

## At Amin Ali Al Namr Gen. Cont. Est., our safety approach includes:

- Job-specific risk assessments before every task
- Regular orientation programs for all workers
- Weekly safety audits and compliance tracking
- Frequent safety meetings to address challenges and improvements
- Daily toolbox talks, led by the Safety Officer, to address immediate jobsite risks



We are committed to continuous improvement, maintaining high safety standards to ensure a secure, productive environment for everyone involved in our operations.



# QUALITY STATEMENT

We consider quality management and its related objectives as a core value embedded in every function of our organization. Our Integrated Management System (IMS), covering Quality, Health, Safety, and Environment (QHSE), is based on internationally recognized standards: ISO 9001:2015 for Quality Management, ISO 45001:2018 for Occupational Health and Safety, and ISO 14001:2015 for Environmental Management. This system reflects our commitment to excellence and accountability.

We are flexible in adopting and adhering to our clients' specific QHSE requirements, aligning them with our own robust management framework. All our employees are thoroughly trained in QHSE activities in accordance with the IMS, and we ensure that our subcontractors and suppliers meet proven QHSE standards as part of their qualification process.

With an efficient management team and structured policies, we continuously drive improvement while maintaining cost-effectiveness. Regular internal and external audits are conducted to ensure compliance with our established QHSE procedures and standards.

Board meetings, performance reviews, and team briefings consistently reinforce the importance of total quality management. As a result, continuous improvement is deeply rooted in our core work culture.



## SAFETY STATEMENT

Amin Ali Al Namr Gen. Cont. Est. is fully committed to protecting the health, safety, and well-being of all employees, resources, property, and stakeholders, while also preventing environmental pollution. Our focus is on continuous improvement in Health, Safety, and Environmental (HSE) performance to reduce risks and minimize environmental impact related to our construction operations.

To uphold this commitment, we will:

- Provide and maintain safe and healthy working conditions for all.
- Implement strong programs for incident prevention and environmental protection.
- Ensure our activities do not pose harm to people or the environment—whether directly or indirectly.

Line managers hold the primary responsibility for safeguarding the health, safety, and environmental welfare of our workforce. However, every employee also shares the duty to work safely and follow company policies and standards.

The principle "Safety First" will be promoted to everyone working under our control, ensuring they understand and act on their personal responsibilities toward Health, Safety, and Environmental care.

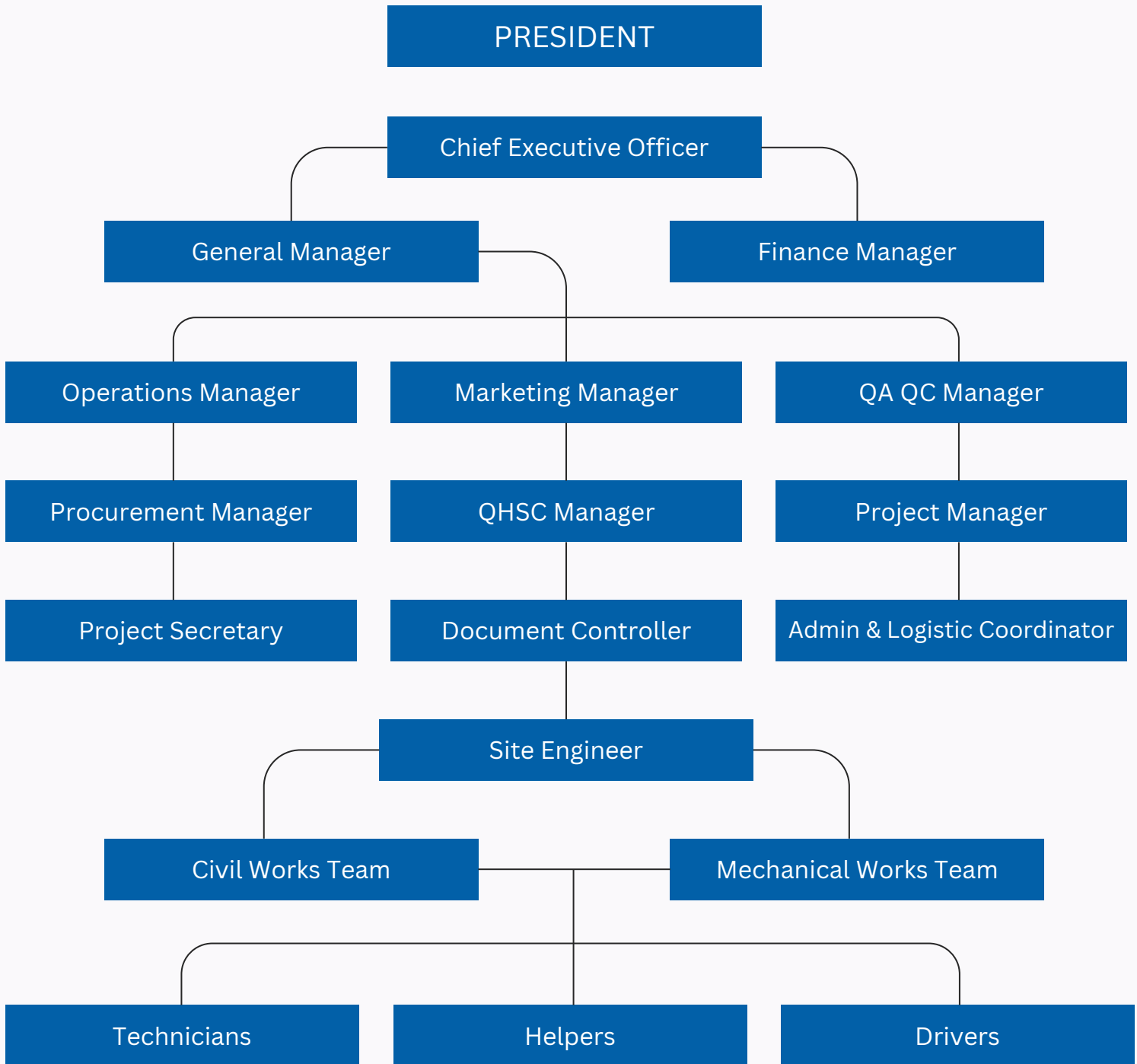


## OUR RECENT CLIENTS

We take pride in delivering high-quality industrial services to a wide range of clients across various sectors. Our expertise includes fabrication, scaffolding solutions, blasting and painting, machining, plant maintenance, electrical services, manpower supply, and general trading. Over the years, we have built strong, lasting relationships by consistently providing reliable, efficient, and results-driven solutions tailored to meet each client's unique needs.



# ORGANISATION CHART



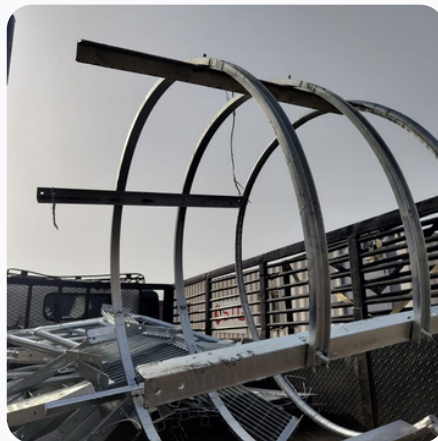
# PROJECT GALLERY



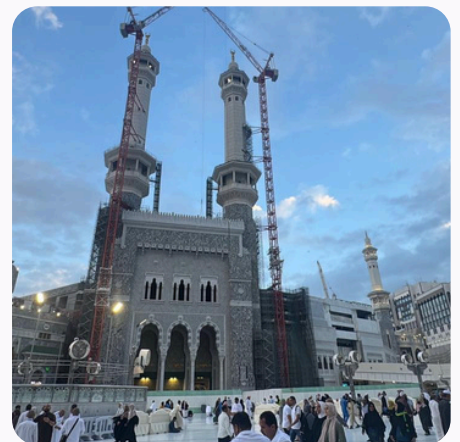
# PROJECT GALLERY



# PROJECT GALLERY



# PROJECT GALLERY



# LICENSES & CERTIFICATION



100231073930388

تاريخ الإصدار: 2023/02/26  
الرقم المميز: 300761469  
4



الهيئة العامة للزكاة والدخل  
General Authority of Zakat & Tax



شهادة تسجيل في ضريبة القيمة المضافة  
VAT Registration Certificate

تشهد الهيئة العامة للزكاة والدخل بأن المكلف أدناه مسجل في ضريبة القيمة المضافة بتاريخ 2018/02/19

Hereby, The General Authority of Zakat & Tax (GAZT) certifies that the taxpayer below is VAT registered on 19/02/2018

Taxpayer Name: مؤسسة أمين علي النمر للمقاولات العامة

VAT Registration Number: 300761469400003

Effective Registration Date: 2018/03/01

Taxpayer Address: القطيف 319110

اسم المكلف:  
رقم التسجيل الضريبي:  
تاريخ نفاذ التسجيل:  
عنوان المكلف:



كمكلف مسجل في ضريبة القيمة المضافة، لا يجوز لك تحصيل ضريبة القيمة المضافة من عملائك قبل تاريخ نفاذ التسجيل بالضريبة. في حال تبين غير ذلك، ستقوم الهيئة العامة للزكاة والدخل بتنفيذ الغرامات المستحقة

هذه الوثيقة مرسله من النظام الآلي ولا تحتاج إلى توقيع  
- الهيئة العامة للزكاة والدخل -

# LICENSES & CERTIFICATION



100231075930389

2023/02/26 تاريخ الإصدار:  
300761469 الرقم المميز:  
4



الهيئة العامة للزكاة والدخل  
General Authority of Zakat & Tax



Taxpayer Name:	مؤسسة أمين علي النمر للمقاولات العامة	اسم المكلّف:
CR / License / Contract No.:	2053031773	رقم السجل/الرخصة/العقد:
Tax Period:	ربع سنوي/Quarterly	الفترة الضريبية:
First Filing due date:	2018/04/30	تاريخ استحقاق أول إقرار ضريبي:

### قائمة فروع المكلّف

#### List of Taxpayer Branches

المدينة City	اسم الفرع Branch Name	رقم الرخصة License No.	رقم السجل التجاري CR No.
القطيف	تابع السجل الرئيسي	1732	
القطيف	ورشة أمين علي النمر للحداثة والأمنيوم		2053017721



كمكلف مسجل في ضريبة القيمة المضافة، لا يجوز لك تحصيل ضريبة القيمة المضافة من عملائك قبل تاريخ نفاذ التسجيل بالضريبة. في حال تبين غير ذلك، ستقوم الهيئة العامة للزكاة والدخل بتنفيذ الغرامات المستحقة

**هذه الوثيقة مرسلة من النظام الآلي ولا تحتاج إلى توقيع**

**- الهيئة العامة للزكاة والدخل -**

# LICENSES & CERTIFICATION



مؤسسة امين علي النمر للمقاولات العامة

السجل التجاري: 2053031773

وزارة التجارة  
Ministry of Commerce

رمزك التجاري QR Code  
من خلاله يمكنك التحقق المباشر من المعلومات:

- السجل التجاري
- شهادة السعودة
- شهادة الزكاة
- رخصة البلدية
- برنامج نطاقات
- الغرفة التجارية

MCgovSA  
www.mc.gov.sa

شهادة تسجيل مؤسسة فردية  
Individual Establishment Registration Certificate

وزارة التجارة  
Ministry of Commerce

الرقم الموحد: ٧-١١٨-٢٥٢٢  
رقم المنشأة: ٢٠٥٣-٢١٧٧٢  
التاريخ: ١٤٣٥/١١/٢٠ هـ

الاسم التجاري للمؤسسة: مؤسسة امين علي النمر للمقاولات العامة  
مركزها الرئيسي: القطيف- القديح- الامام علي

هاتف: ..... الرمز البريدي: ..... ص. ب: .....

اسم التاجر: امين علي عبدالله النمر الجنسية: سعودي تاريخ الميلاد: ١٤٠٨ هـ

رقم السجل المدني - الإقامة: ١٠٥٠٨٩٩٥٥٦ تاريخه: ١٤٢٤/٢/٧ هـ مصدره: القطيف

رقم الحفيظة - الجواز: ١٠٢٢٧٢ تاريخه: ١٤٢٤/٢/٧ هـ مصدره: القطيف

النشاط: للاطلاع على بيانات الأنشطة الرجاء مسح الرمز التجاري

رأس المال: ٢٥٠٠٠٠ خمسة و عشرون ألف ريال فقط لا غير

اسم المدير أو الوكيل المفوض: امين علي عبدالله النمر

الجنسية: سعودي تاريخ الميلاد: ١٤٠٨ هـ

رقم السجل المدني - الإقامة: ١٠٥٠٨٩٩٥٥٦ تاريخه: ١٤٢٤/٢/٧ هـ مصدره: القطيف

سلطات المدير: .....

يشهد مكتب السجل التجاري بمدينة: القطيف بأنه تم تسجيل المؤسسة المذكورة أعلاه بمدينة: القطيف

وتنتهي صلاحية الشهادات في: ١٤٤٦/١/١٩ بموجب الإيصال رقم: ٥٣٩١٣٦٧ وتاريخ: ١٤٤٢/١/١٩

To Verify The Information Of This Certificate Visit: <https://mc.gov.sa>  
+966 11 294 4444 | الرياض 11162 | Kingdom of Saudi Arabia | المملكة العربية السعودية | MCgovSA

# LICENSES & CERTIFICATION

**السادة/ مؤسسة امين علي النمر للمقاولات العامة**  
نهنكم بدخول عالم الأعمال التجارية وإصدار سجلكم التجاري، ونتطلع أن يساهم هذا السجل في تحقيق تطلعاتكم، وأن يكتب الله لكم التوفيق والنجاح في عملكم التجاري وأن تكون شريكاً في تعزيز اقتصاد المملكة العربية السعودية.  
يسرنا إبلاغكم بأن رقم منشآتكم الموحد هو ٧٠١١٨٠٢٥٢٢ وقد تم ربطه بالخدمات الحكومية التي ستحتاجها مستقبلاً. وهي على النحو التالي:

الرقم:	رقم سجلكم التجاري للمنشأة	
٢٠٥٣٠٣١٧٧٣	رقم منشآتكم لدى وزارة الموارد البشرية والتنمية الاجتماعية	وزارة التجارة Ministry of Commerce
١١٠٠٤٩٥	رقم منشآتكم لدى وزارة الموارد البشرية والتنمية الاجتماعية	وزارة الموارد البشرية والتنمية الاجتماعية Ministry of Human Resources Development
٣٠٠٧٦١٤٦٩٤ ٥٠١٦٢٧٥٥٠	تم تسجيل منشآتكم مجاناً لمدة سنة في خدمة واصل التجاري	SPL
١٨٦٨٥٥ ٤٢٠٤٤٢٧٥٩٧٠	رقم منشآتكم لدى هيئة الزكاة والضريبة والجمارك	هيئة الزكاة والضريبة والجمارك Zakat, Tax and Customs Authority
	رقم منشآتكم لدى المؤسسة العامة للتأمينات الاجتماعية	المؤسسة العامة للتأمينات الاجتماعية General Authority for Social Security
	رقم منشآتكم لدى الغرفة التجارية.	الغرفة التجارية السعودية Federation of Saudi Chambers
	رقم رخصة "بلدية" فورية (في حال اختياركم)	بلدي balady



يُتيح تطبيق "نوافذ منشآت" العديد من الخدمات الممكنة لك في عالم الأعمال و منها الحصول على الإرشاد و الاستشارات ، تطبيق "نوافذ منشآت" بوابة دخولك إلى عالم الأعمال، <https://www.monshaat.gov.sa/nawafth>

منشآت  
monsha'at  
Ministry of Commerce

ويمكنك فتح حساب بنكي دون الحاجة إلى أي أختام لمنشأتك

كما جمعنا لك كافة الانظمة واللوائح بلغة بسيطة في دليل التاجر لتمارس عملك التجاري بسهولة [mc.gov.sa/trader/guide](https://mc.gov.sa/trader/guide)



Amin Ali Al Namr Gen. Cont. Est.

# THANK YOU

We appreciate your interest in our services and capabilities.  
Our team is ready to support your goals with commitment and expertise.  
Let's build a successful partnership together.



Qatif - Qudayh - Imam Ali St. - P.O. Box 10228 - Zip Code 31911



+966 59 887 2895



aanestksa.com

رؤية  
VISION  
2030  
المملكة العربية السعودية  
KINGDOM OF SAUDI ARABIA